

# Instruction Sheet

## Subject: 8263472 Blower Replacement Instructions

Models affected: McDonald's Japan LOV Fryers

Follow these instructions to replace the blower.

1. If necessary, remove any obstruction that restricts access to the blower, such as the disposal quick disconnect, by removing the two screws which attach the bracket (see Figure 1).
2. Disconnect the 2-pin blower power connection (see Figure 2).
3. Using an 11/32" open end wrench, remove the blower grill from the blower by removing the two nuts attaching the grill (see Figure 3). This allows access to the left two nuts of the blower.
4. Remove the diverter behind the grill by pulling out at an angle (see Figure 4).
5. Remove the left blower nuts using a 7/16" driver and loosen the right blower nuts 2 or 3 turns (see Figure 5).

In This Kit		
Part #	Description	Qty
1085046	BLOWER	1
8197493	INSTRUCTIONS	1

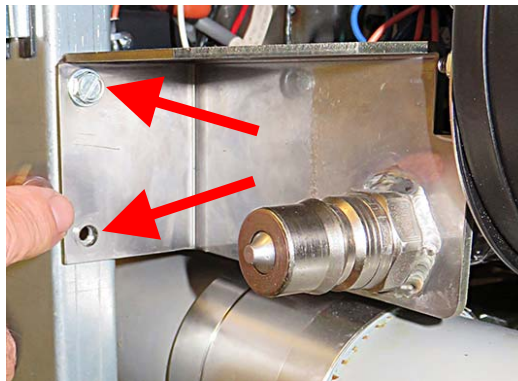


Figure 1

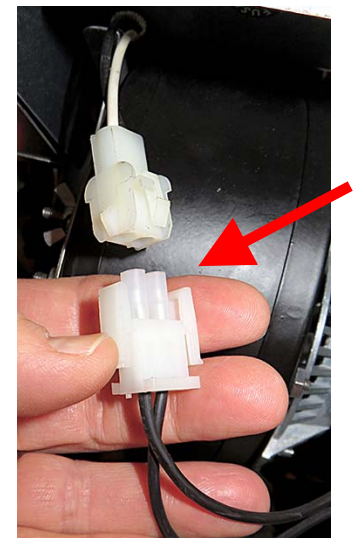


Figure 2

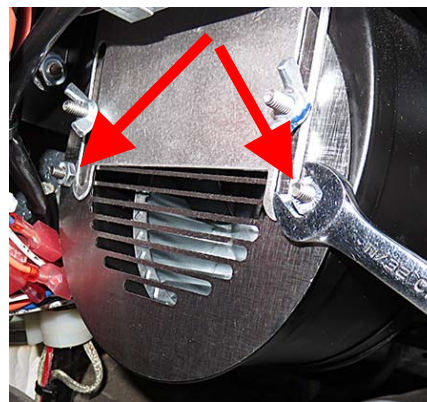


Figure 3

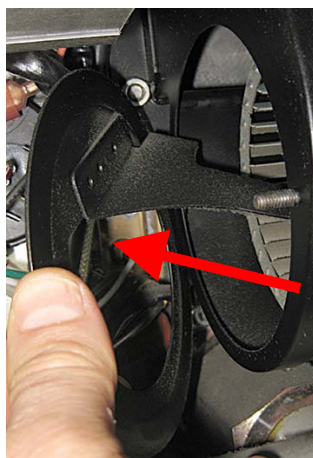


Figure 4

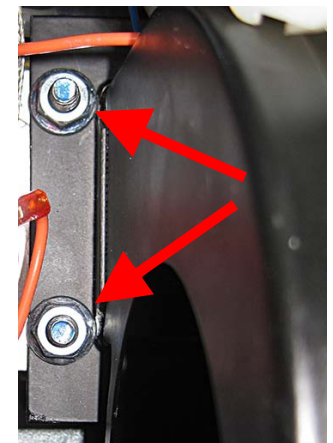
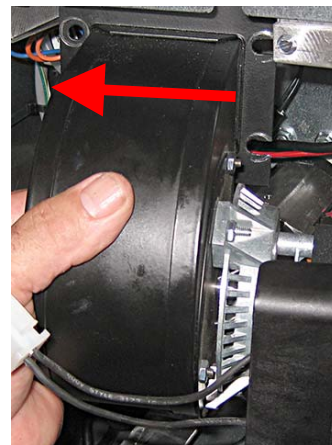


Figure 5

6. Slide the blower off the right nuts towards the left (see Figure 6).
7. Slide the new blower slots onto the bolts first.
8. Reverse the steps to install the new blower, ensuring that no wires are under the blower flange.



**Figure 6**